



2016-2017

Getting Around Yoho National Park



Également offert en français

What's Inside

- *Top 10 Things to Do*
- *Suggested Itineraries*
- *Maps*
- *Where to Camp*
- *Safety Information*

P. Zizka



Parks Canada
Parcs Canada

Canada



United Nations
Educational, Scientific and
Cultural Organization
Organisation
des Nations Unies
pour l'éducation,
la science et la culture



Canadian Rocky
Mountain Parks
Inscribed on the World
Heritage List in 1984
Parcs des montagnes
Rocheuses canadiennes
inscrit sur la Liste du
patrimoine mondial en 1984

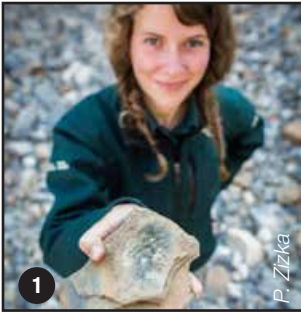
K. Smith

OUR STORY

During a celebrated expedition to explore the West, Dr. James Hector travelled ahead of the group, and became the first European to discover a steep mountain pass in 1858. After the surgeon's trusty steed knocked him over with a blow to the chest, the spectacular route was dubbed Kicking Horse Pass. Later, the Canadian Pacific Railway, whose transcontinental route travelled through the pass, set up restaurants at the base of Mount Stephen to avoid pushing heavy dining cars up the mountain. This laid the groundwork for creating the Mount Stephen Reserve, renamed in 1901 as Yoho National Park. Eight years later, a visiting scientist, Dr. Charles Doolittle Walcott, discovered the Burgess Shale fossils on Mount Wapta. These exquisitely preserved marine organisms offer a glimpse back more than 505 million years ago. With fossils designated as part of a UNESCO World Heritage Site, 36 peaks soaring above 3 000 m, the rambunctious Kicking Horse River and numerous breathtaking waterfalls, it is no surprise Yoho was named after a Cree expression meaning "awe and wonder."

A UNESCO WORLD HERITAGE SITE

Four of the mountain national parks—Banff, Jasper, Yoho and Kootenay—are recognized by the United Nations Educational, Scientific and Cultural Organization as part of the Canadian Rocky Mountain Parks World Heritage Site, for the benefit and enjoyment of all nations. Among the attributes that warranted this designation were vast wilderness, diversity of flora and fauna, outstanding natural beauty and features such as Lake Louise, Maligne Lake, the Columbia Icefield and the Burgess Shale.



1 **BURGESS SHALE GUIDED HIKES**

Meet your ancient ancestors and hold a piece of earth's history on a guided hike to the restricted Walcott Quarry or Mount Stephen fossil sites. Reservations are required. Visit reservations.pc.gc.ca to book your spot!



2 **CAMPING**

Tenting? RV-ing? Enjoy a family getaway in one of Yoho's four rustic campgrounds. Roast marshmallows, take a hike or wander through the community of Field. Yoho's campgrounds keep you close to the adventure!



3 **INTERPRETIVE PROGRAMS**

Why is Emerald Lake so green? How tall is Takakkaw Falls? What do fossils have to do with Star Wars™? Get the answers to these questions and more at one of many interpretive programs offered daily in July and August.



4 **VILLAGE OF FIELD**

Take an afternoon walk and experience Field's mountain hospitality. Stay in a unique guesthouse, pick out the perfect souvenir in one of the gift shops or enjoy the culinary delights of this charming community.



5 **EMERALD LAKE**

Admire incredible views of mountain peaks and wildflowers on an afternoon stroll around this gem-coloured lake. Pack a picnic lunch or go for a canoe ride to get a different perspective of the surrounding mountains.

6 **NATURAL BRIDGE**

Marvel at the force of the Kicking Horse River as it cascades under a naturally formed stone bridge. This rambunctious river takes its name from a near-fatal kick that stunned James Hector while exploring the area in 1858.

7 **TAKAKKAW FALLS**

Enjoy a scenic drive on the Yoho Valley Road. Then, cool off in the mist as you stand at the base of the thundering waters of one of the highest waterfalls in Canada. This is your #timetoconnect. Snap a selfie from the red chairs and share your adventure!

8 **HAVE A PICNIC**

Bask in the sun and enjoy a picnic with a view at Faeder Lake or Finn Creek day-use areas. Let the kids run around and play at the Yoho Visitor Centre and day-use area.

9 **HIKING**

Lace up your hiking boots for an epic backcountry adventure! See Yoho from the perspective of the park's first wardens on the Paget or Mount Hunter fire lookout trails or take an afternoon stroll to Hamilton Falls.

10 **WAPTA FALLS**

At 30 metres (98 feet) high and 150 metres (492 feet) wide, this is the largest waterfall on the Kicking Horse River. Take a gentle 4.6 km (2.9 mile) return hike through verdant forests to a stunning viewpoint.

Suggested Itineraries



CRMR / D. Ziver

HALF-DAY ADVENTURES

TAKE A SCENIC DRIVE

Get off the Trans-Canada Highway and explore! Follow Emerald Lake Road and discover a jewel of the Canadian Rockies as you paddle, walk or ski around the magnificent **Emerald Lake**. From late June until early October, drive or bike the 13 km scenic Yoho Valley Road. Experience the power of **Takakkaw Falls**—one of the tallest waterfalls in Canada. Pack a picnic lunch or stop and watch the trains as they snake overtop of themselves at the **Spiral Tunnels Viewpoints**.

STRETCH YOUR LEGS!

Enjoy an easy half-day hike to a peaceful backcountry lake. The whole family will enjoy the 6.2 km (3.9 mi) return hike through a mature forest to **Sherbrooke Lake**. Relax next to this glacier fed lake and take in the view of the surrounding mountain peaks. For an additional challenge, head east at the fork in the trail and climb to **Paget Lookout**. From this historic viewpoint, admire the view of Kicking Horse Pass and see why this was a crucial vantage point when watching for wildfires.

A FULL DAY OF FUN

TAKE A WATERFALL TOUR

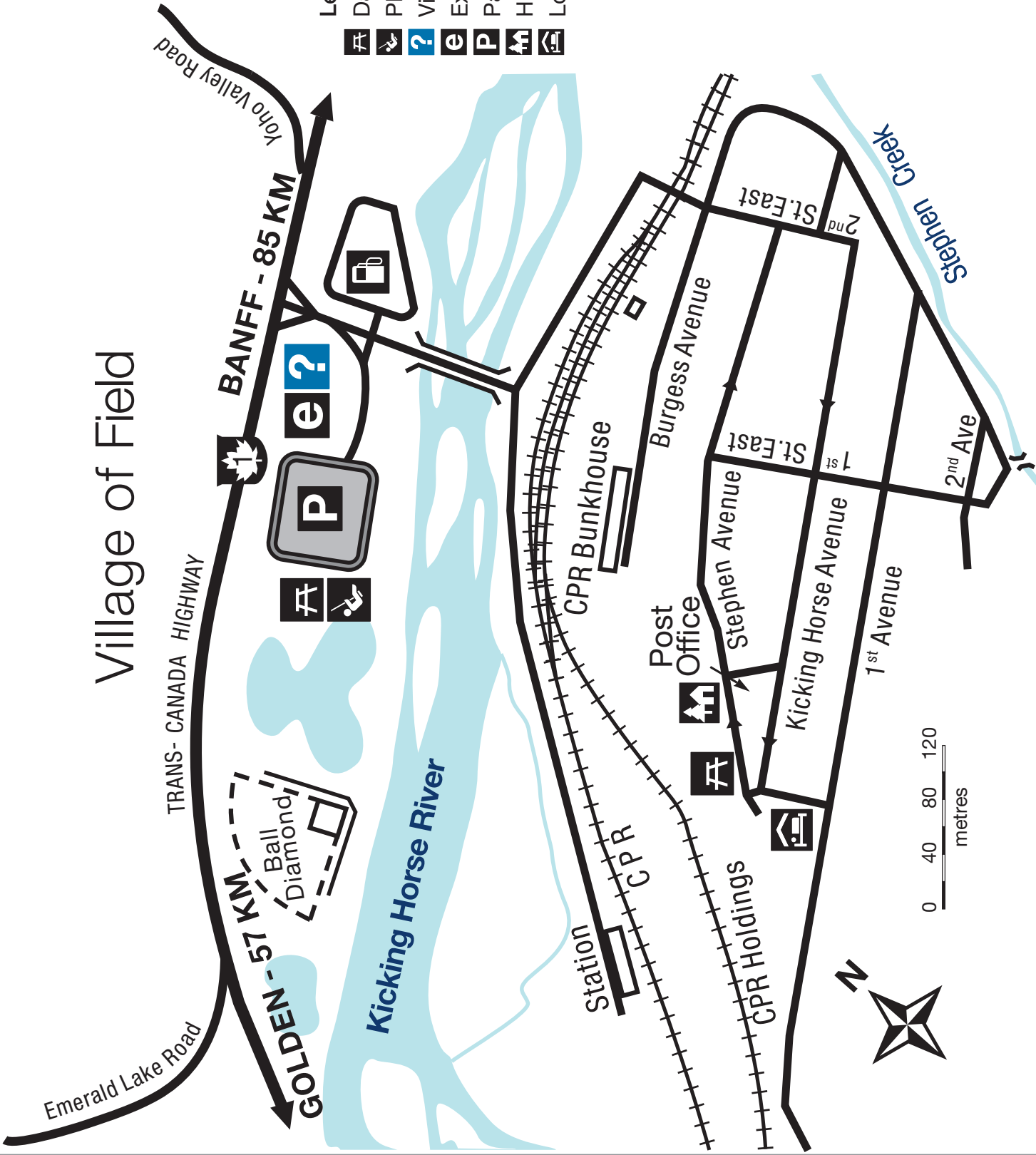
Explore five of Yoho's most impressive waterfalls on foot. Feel the cool mist on your face at **Takakkaw Falls** and snap a selfie from the red chairs before following the Laughing Falls Trail to **Point Lacey Falls** and **Angel's Staircase**. Climb through a mature forest to **Laughing Falls**; then continue along this historic trail, first cut by the Canadian Pacific Railway, to **Twin Falls**. Here the double waterfalls tumble over a massive limestone cliff.

SNAP A PICTURE

Climb above the treeline and get a bird's eye view of Yoho National Park on the epic 17.5 km **Iceline Trail**. Beginning from the Takakkaw Falls Campground, follow the trail to **Laughing Falls**. Stop for lunch, then continue climbing through a mature forest to a subalpine meadow. Look down on **Takakkaw Falls** and stand amongst glaciers as you take in the expansive view of the Yoho and Kicking Horse valleys. Take a break at Yoho Lake and relax in the red chairs.

Village of Field

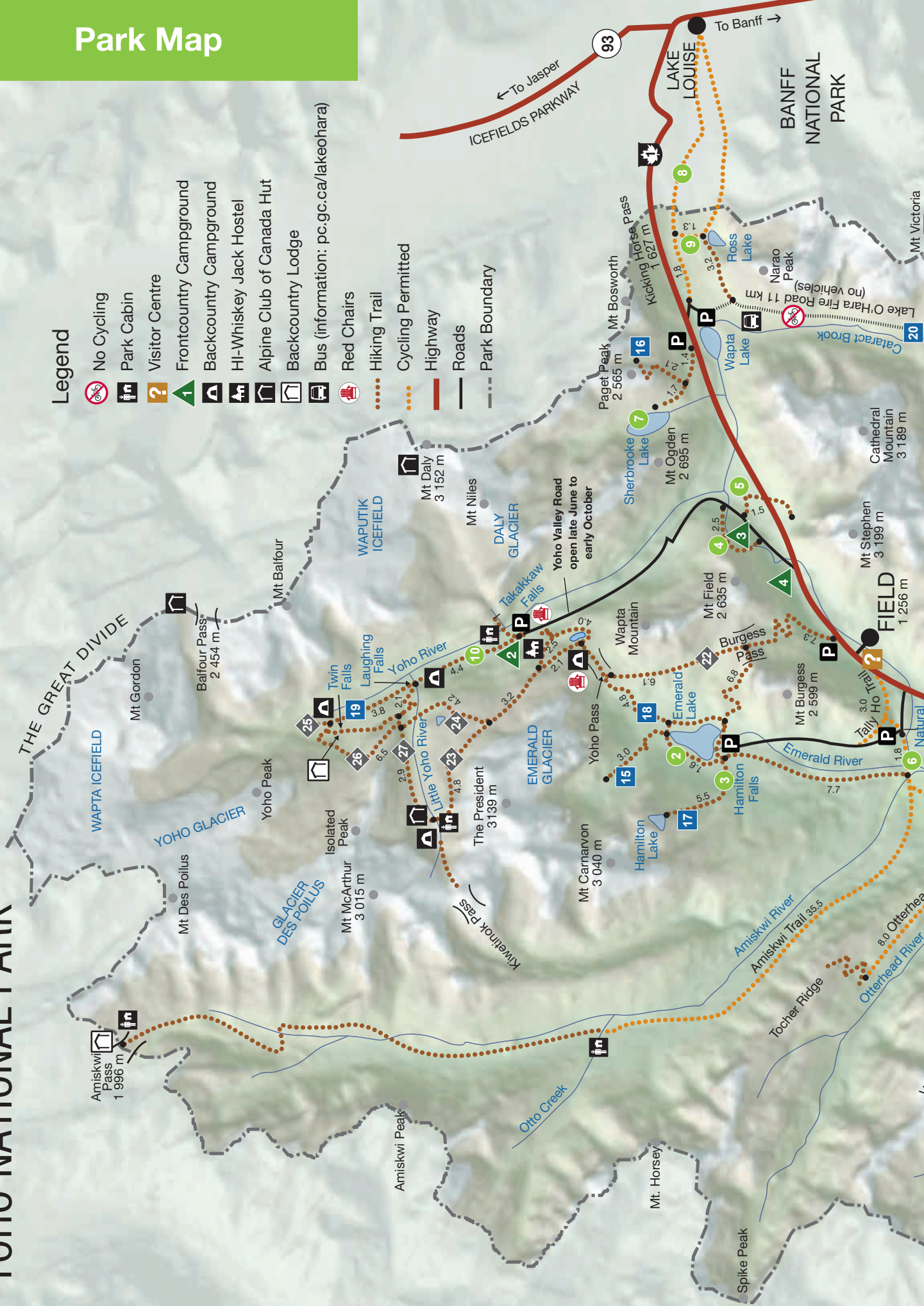
- Legend**
- Day-use area
 - Playground
 - Visitor centre
 - Exhibit
 - Parking
 - Hostel
 - Lodge

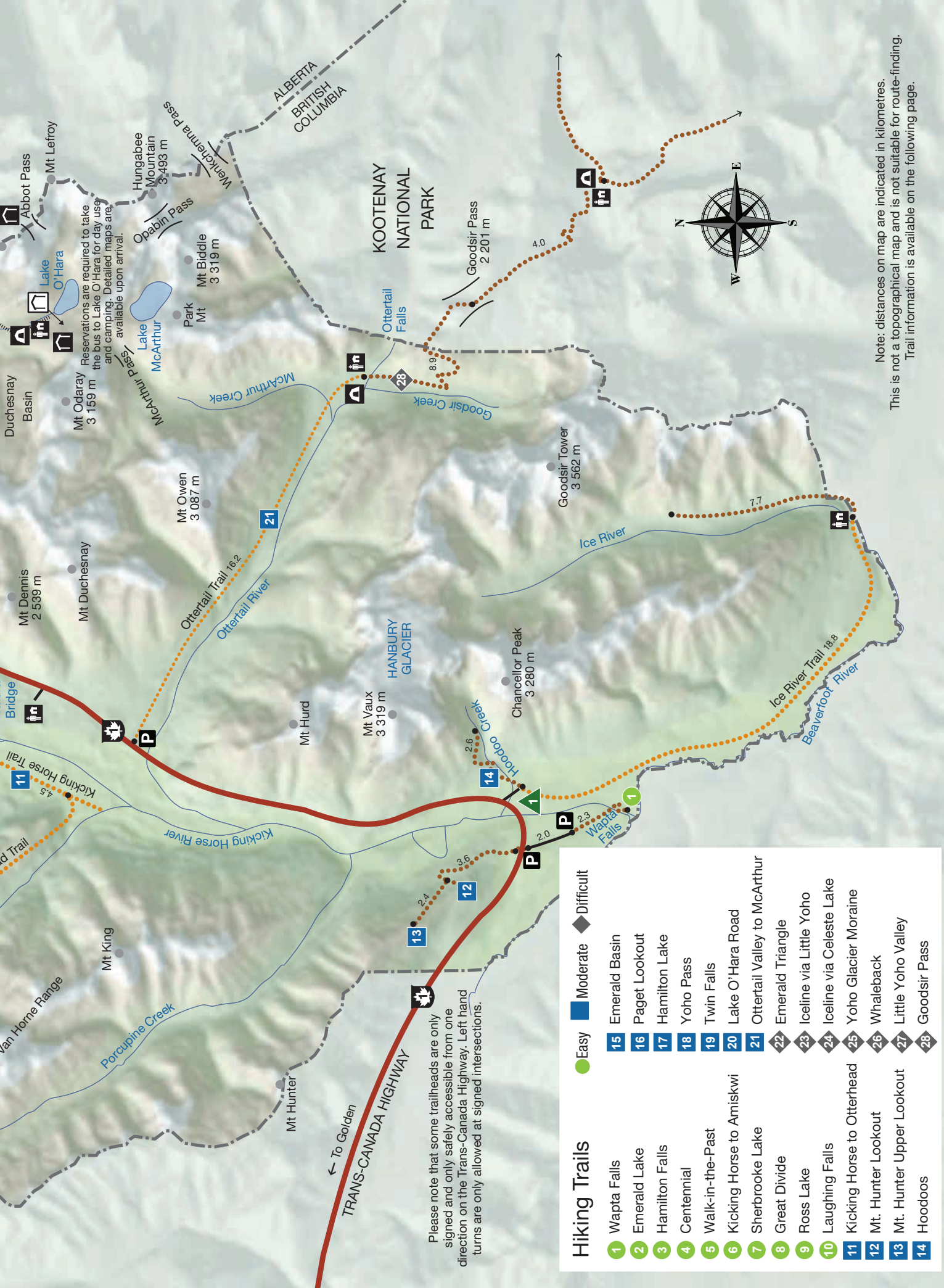


Park Map

YOHO NATIONAL PARK

- Legend**
- No Cycling
 - Park Cabin
 - Visitor Centre
 - Frontcountry Campground
 - Backcountry Campground
 - HI-Whiskey Jack Hostel
 - Alpine Club of Canada Hut
 - Backcountry Lodge
 - Bus (information: pc.gc.ca/lakeohara)
 - Red Chairs
 - Hiking Trail
 - Cycling Permitted
 - Highway
 - Roads
 - Park Boundary





Please note that some trailheads are only signed and only safely accessible from one direction on the Trans-Canada Highway. Left hand turns are only allowed at signed intersections.

Hiking Trails

● Easy	■ Moderate	◆ Difficult
1	15	22
2	16	23
3	17	24
4	18	25
5	19	26
6	20	27
7	21	28
8		
9		
10		
11		
12		
13		
14		

- 1 Wapta Falls
- 2 Emerald Lake
- 3 Hamilton Falls
- 4 Centennial
- 5 Walk-in-the-Past
- 6 Kicking Horse to Amiskwi
- 7 Sherbrooke Lake
- 8 Great Divide
- 9 Ross Lake
- 10 Laughing Falls
- 11 Kicking Horse to Otterhead
- 12 Mt. Hunter Lookout
- 13 Mt. Hunter Upper Lookout
- 14 Hoodoos
- 15 Emerald Basin
- 16 Paget Lookout
- 17 Hamilton Lake
- 18 Yoho Pass
- 19 Twin Falls
- 20 Lake O'Hara Road
- 21 Ottertail Valley to McArthur
- 22 Emerald Triangle
- 23 Iceline via Little Yoho
- 24 Iceline via Celeste Lake
- 25 Yoho Glacier Moraine
- 26 Whaleback
- 27 Little Yoho Valley
- 28 Goodsiir Pass

Note: distances on map are indicated in kilometres. This is not a topographical map and is not suitable for route-finding. Trail information is available on the following page.

Where to Hike

Type	Hiking Trail	Estimated time (return)	Distance (return)	Elevation Gain
Short Hikes	Wapta Falls	1.5 hours	4.6 km	gain / loss 30 m
	Emerald Lake	2 hours	5.2 km	minimal
	Hamilton Falls	30 minutes	1.6 km	minimal
	Centennial	45 minutes	2.5 km	minimal
	Walk-in-the-past	1.5 hours	3 km	90 m
	Sherbrooke Lake	2.5 hours	6.2 km	165 m
	Great Divide	2 hours	6 km	minimal
Half Day Hikes	Ross Lake	2 hours	6.4 km	100 m
	Laughing Falls	3 hours	8.8 km	125 m
	Mt. Hunter Lookout	3 hours	7.2 km	410 m
	Hoodooos	2.5 hours	5.2 km	325 m
	Paget Lookout	3 hours	7 km	520 m
Full Day and Overnight Hikes	Hamilton Lake	5 hours	11 km	850 m
	Yoho Pass	5 hours or 2 days	12.8 km	530 m
	Twin Falls	6 hours or 2 days	16.4 km	300 m
	Emerald Triangle	8 hours	19.7 km	880 m
	Iceline via Little Yoho	8 hours or 2 days	20.8 km	710 m
	Iceline via Celeste Lake	7 hours	17.5 km	695 m
	Whaleback	7.5 hours	21.3 km	700 m
	Little Yoho Valley	7 hours	18.6 km	520 m

● Easy ■ Moderate ◆ Difficult

Hiking trails are shown on previous page. Trail reports and hiking maps are available from the Yoho National Park Visitor Centre and at parkscanada.gc.ca/YohoTrails.

Where to Camp

Campgrounds	Full Hook-up	Electrical	Sani Dump	Flush Toilets	Pit Toilets	Showers	Firepit	Cooking Shelter	Drinking Water	Interpretive Programs	Disabled Access	Open Dates	Sites
1 Hoodoo Creek					🚻		🔥	🏠			♿	June 24 - September 5	30
2 Takakkaw Falls (walk-in)					🚻		🔥	🏠	🚰			June 24 - October 10	35
3 Kicking Horse			🚰	🚰		🚻	🔥	🏠	🚰	📖	♿	May 20 - October 10	88
4 Monarch			🚰	🚰				🏠	🚰		♿	May 6 -19 and June 24 - September 5	44

PLANNING TO CAMP IN ANOTHER PARK? BOOK ONLINE OR CALL AHEAD FOR INFORMATION AND RESERVATIONS.

The mountain parks offer extraordinary camping experiences, ranging from full-service RV sites to pristine backcountry settings. Many campsites can be reserved and most fill up quickly. Call ahead or go online for availability and recommendations. Backcountry camping is only permitted at designated sites with a backcountry camping permit.

FRONTCOUNTRY: 1-877-RESERVE OR RESERVATION.PC.GC.CA
BACKCOUNTRY: 250-343-6783 (BEGINNING MAY 1)



Parks Canada

MEET PARKS CANADA'S INTERPRETERS

Do you want to discover more about the uniqueness of Yoho's natural and cultural heritage? Friendly and knowledgeable interpreters are here to help you connect to these special places protected by Parks Canada.

Watch for interpreters at campgrounds and popular day-use areas in Yoho National Park in the summer months.

Check parksCanada.gc.ca/Yoho-interpretation for more information on interpretive experiences in Yoho.

WILDLIFE VIEWING TIPS

Your best chance of observing wild animals is by giving them space to feed, rest and keep their young safe. Help keep them wild:

- **Stay at least three (3) bus lengths (30 m)** away from elk, deer and bighorn sheep.
- **Stay at least ten (10) bus lengths (100 m)** away from bears, cougars and wolves.
- **NEVER feed or approach wildlife.**
- **Keep pets under control and on a leash** at all times.
- Keep children in sight and within close range at all times.
- Consider carrying bear spray when on the trails. Keep it accessible and know how and when to use it.

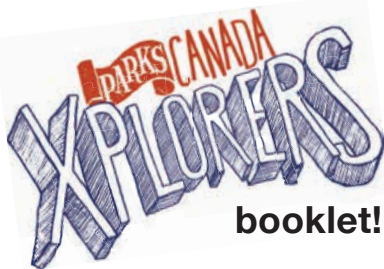
For further information pick up a copy of *Keep the Wild in Wildlife* at a Parks Canada Visitor Centre or visit parksCanada.gc.ca/bears-and-people

To report wolf, bear or cougar sightings call 403-762-1473.



Peter Essick

Hey Kids! Pick up your



booklet!

This booklet has tons of fun activities that you can do on your own or with your family. Complete some of the activities and you will receive a souvenir.

Pick up your booklet at a Parks Canada visitor centre and have fun exploring Yoho National Park.



M. Oliver

MOUNTAIN SAFETY

Unpredictable mountain weather can change road and trail conditions instantly and wildlife can be anywhere, any time. These simple precautions will help ensure you have a safe and enjoyable visit.

- Visit drivebc.ca and 511.alberta to check road conditions prior to heading out.
- Obey speed limits and watch for wildlife on the roadside.
- Stay on designated roads, trails and other hardened surfaces.
- Keep a 'Bare' campsite. Visit parks canada.gc.ca/bare-campsite.
- Make noise on the trails and let wildlife know you are coming.
- Research and plan overnight trips including potential trail restrictions and closures, avalanche conditions and mandatory backcountry permits. Visit parks canada.gc.ca/ynp-backcountry and avalanche.pc.gc.ca for safety tips.
- Let someone know your plans. Cell phones are not reliable in the wilderness.
- Keep clear of cliffs, ledges and fast moving water.

PARK REGULATIONS

Following park regulations while enjoying your national parks will help protect you, the land and our wildlife:

- Keep pets on a leash and under control at all times. Please collect and properly discard pet feces.
- Take only photographs. It is illegal to pick flowers, mushrooms, cut down trees, branches, remove cultural artifacts or fossils, or otherwise cause damage to natural objects or living things.
- Be considerate of your neighbours. Liquor consumption is prohibited in public places, day-use areas, and during set periods in campgrounds. Respect quiet hours and liquor bans in campgrounds.
- Stay out of closed areas. Area closures or activity restrictions are implemented when visitors are at risk or when wildlife requires additional protection. Signs indicate the areas impacted.
- Be careful with fire. Fires are permitted only in designated areas with fireboxes or firepits. Extinguish fires completely. Do not use deadwood, bark or branches for fuel. Report wildfires immediately.
- Buy fishing permits. Anglers require a national park fishing permit, available at Parks Canada visitor centres. Provincial licenses are not valid in national parks.
- Going boating? Motors are not allowed on most lakes.
- Motorized off-road travel is not permitted.

THE CANADA NATIONAL PARKS ACT

Park Wardens are responsible for enforcing park regulations as required by the *Canada National Parks Act*. To report national park violations, call 24 hours a day, 7 days per week.

1-888-927-3367 (Banff, Yoho, Kootenay and Waterton Lakes)

1-877-852-3100 (Jasper, Mount Revelstoke and Glacier)

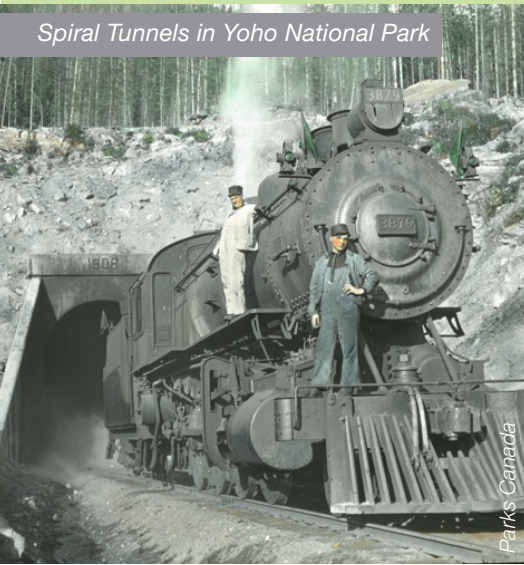
Visit pc.gc.ca/mtnregulations

Violators will be charged, be required to appear in court and could pay fines of up to \$25 000.



REMEMBERING CANADA'S HISTORY...

Spiral Tunnels in Yoho National Park



ON THE ROAD TO 2017

Canada turns 150 in 2017! On the road to this momentous celebration, Parks Canada's treasured natural and historic places will host special programs and events to commemorate the milestones that contributed to the Canada of today, strong and free. Experience what inspired Canada!

parks canada.gc.ca



WANT MORE INFORMATION ABOUT YOHO NATIONAL PARK?

Find us online at: facebook.com/YohoNP, twitter.com/YohoNP or parks canada.gc.ca/Yoho.

These detailed brochures are available online or for pick-up at a Parks Canada visitor centre.



Stop by the Friends of Yoho store in the Yoho National Park Visitor Centre for souvenirs, guidebooks and topographical maps.

WANT MORE INFORMATION ON OTHER MOUNTAIN NATIONAL PARKS?

BANFF

Banff Visitor Centre: 403-762-1550
Lake Louise Visitor Centre: 403-522-3833
pc.gc.ca/banff

Banff Lake Louise Tourism: 403-762-8421
banfflakelouise.com

JASPER

Jasper Information Centre: 780-852-6176
pc.gc.ca/jasper

Tourism Jasper: 780-852-6236
jasper.travel

KOOTENAY

Kootenay Visitor Centre: 250-347-9505
pc.gc.ca/kootenay

Tourism Radium/Radium Chamber of Commerce:
1-888-347-9331
RadiumHotSprings.com

YOHO

Yoho Visitor Centre: 250-343-6783
pc.gc.ca/yoho

Accommodations and attractions in Field:
field.ca
Tourism Golden: 1-800-622-4653
tourismgolden.com

MOUNT REVELSTOKE AND GLACIER

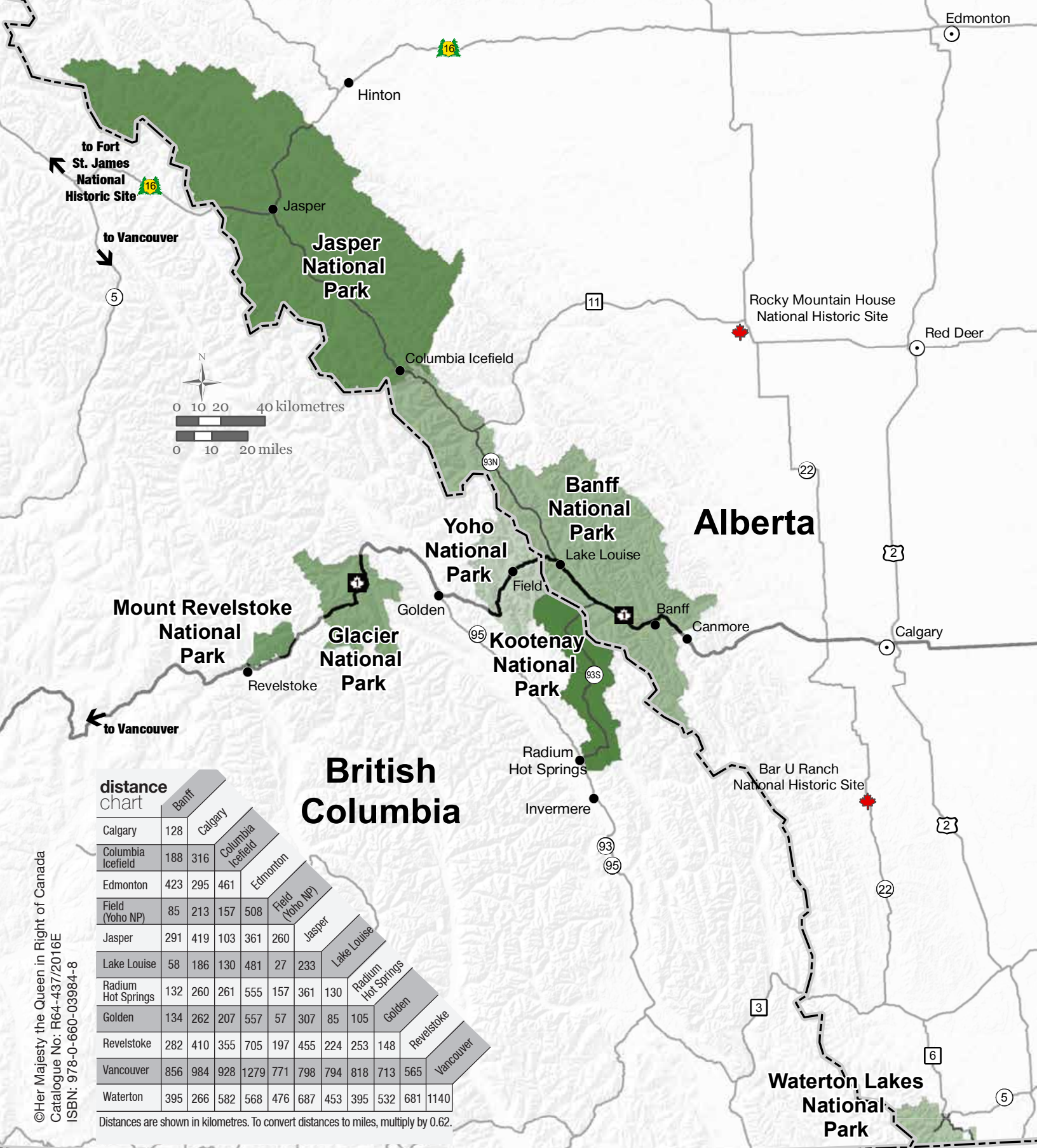
Rogers Pass Discovery Centre: 250-837-7500
pc.gc.ca/glacier • pc.gc.ca/revelstoke

Tourism Revelstoke: 1-800-487-1493
seerevelstoke.com

WATERTON LAKES

Waterton Lakes Visitor Centre: 403-859-5133
pc.gc.ca/waterton

Waterton Chamber of Commerce
mywaterton.ca



© Her Majesty the Queen in Right of Canada
 Catalogue No.: R64-437/2016E
 ISBN: 978-0-660-03984-8



Please slow down, for your safety and ours.



FOR EMERGENCIES DIAL 911
 (Police, Fire and Ambulance)
 Road reports: Visit 511.alberta.ca or Drivebc.ca
 Cell phone coverage is not reliable in all areas of the mountain parks.